

MEMORANDUM

DATE: June 8, 2015

TO: Honorable Mayor and City Commission

VIA: Kenneth Fields, City Manager

FROM: James Slaton, Public/Support Services Director

SUBJECT: Modification of the Official Traffic Map

SYNOPSIS: Staff is requesting a modification of the Official Traffic Map for the purpose of designating a 25 Mph Speed Limit on Carlton Avenue.

RECOMMENDATION

It is recommended that the City Commission take the following action:

1. Designate the Speed Limit on Carlton Avenue, between 7th Street and Marietta Street, to be 25 Mph.

BACKGROUND

There is no speed limit currently posted on Carlton Avenue and no record of the City Commission designating a speed limit on Carlton Avenue via the Official Traffic Map. Florida Statute 316.189(1) establishes a speed limit of 30 Mph on streets within municipal boundaries where speed limits are not designated. A traffic study conducted by the Lake Wales Police Department in early May, 2015 recommends that vehicle speeds should be limited to 25 Mph in the area. The volume of pedestrian and vehicular traffic on Carlton Avenue increases significantly in the mornings and afternoons during the school year and is a cause for concern when children are walking to and from Hillcrest Elementary School.

A speed limit of 25 Mph on Carlton Avenue is consistent with the speed limits of adjacent streets in the area.

The Lake Wales Police Department has reviewed the proposed modification of the Official Traffic Map and supports the request to establish a 25 Mph speed limit on Carlton Avenue.

The location outlined in this proposal is within the Corporate Limits of the City of Lake Wales. Section 316.006 (2) (a) Florida Statutes, provides that "Chartered municipalities shall have original jurisdiction over all streets and highways located within their boundaries, except state roads". The City Commission is empowered by Charter to make changes as necessary to the Official Traffic Map of the City.

OTHER OPTIONS

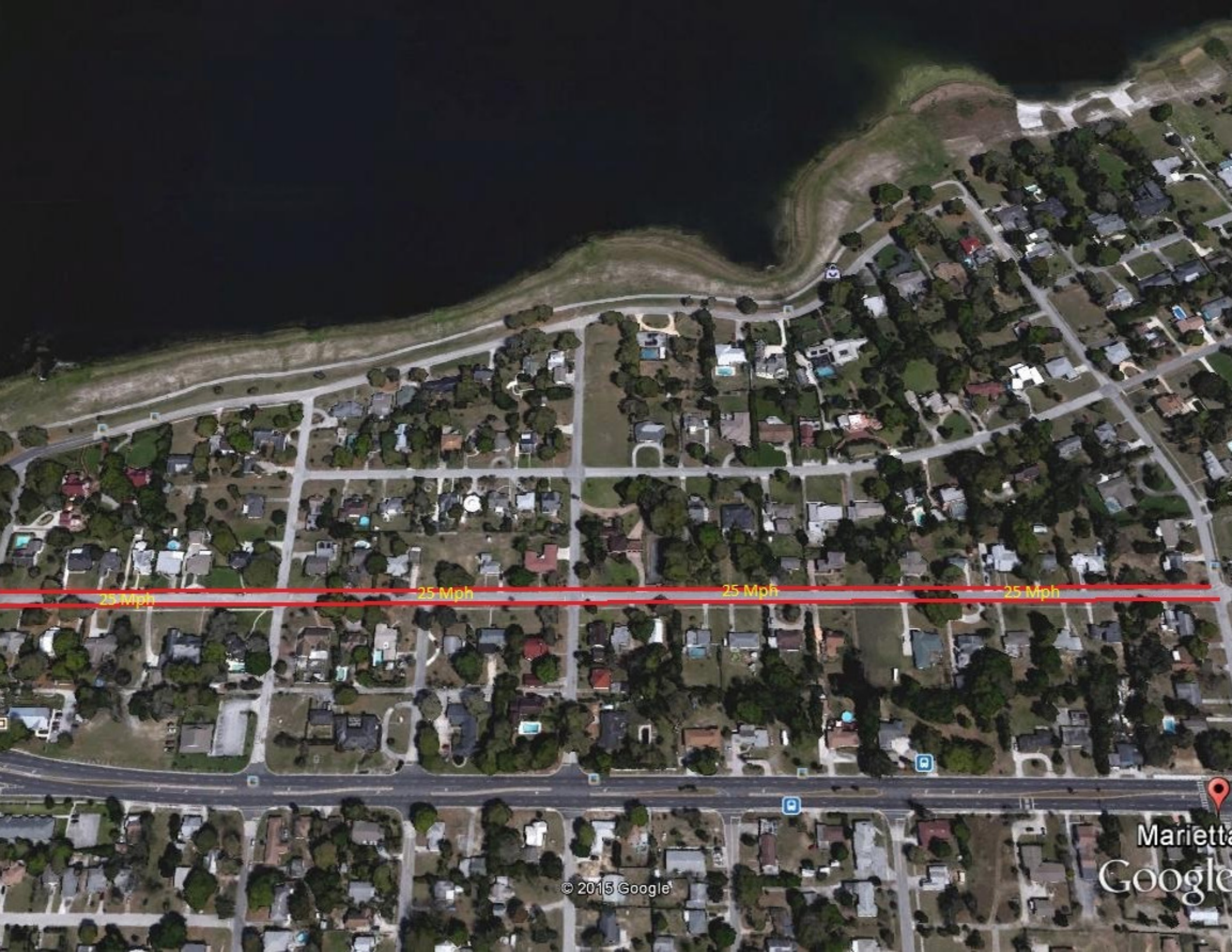
The Commission may choose not to make the requested changes to the Official Traffic Map

FISCAL IMPACT

The total cost of the eight required speed limit signs is \$546.80

ATTACHMENTS

Map of the affected Street



25 mph

25 Mph

25 Mph

25 Mph